

COLD FORMED

COLD FORMED BUILDING GUIDE

METALBUILDING
OUTLET CORP.



METALBUILDING
OUTLET CORP.

(303) 948-2038 | METALBUILDINGOUTLET.COM

WHO WE ARE

YOUR ONE STOP SOURCE FOR COMPLETE BUILDING SYSTEMS

Congratulations on the purchase of your new metal building system through Metal Building Outlet Corp!

Metal Building Outlet has an outstanding reputation in the metal building business because we maintain long-lasting business relationships with leading field techs, engineers, contractors, design professionals, industry vendors, and customer service professionals. Moreover, we are committed to using only high-quality materials and providing superior customer service to all clientele.

We strive to exceed your expectations!

Metal Building Outlet



WHO WE ARE

2

PRODUCT WARRANTIES



ALL METAL BUILDING OUTLET BUILDINGS ARE BACKED BY WRITTEN WARRANTIES

All Metal Building Outlet buildings are backed by written warranties. We provide some of the best warranties in the industry and strive to provide the highest quality materials available. Product warranties are specific to your project. Copies can be requested as a part of your material purchase.

PRODUCT WARRANTIES

3



FITNESS WARRANTY



COLOR WARRANTY



PRODUCT WARRANTY

METALBUILDING
OUTLET CORP.

(303) 948-2038 | METALBUILDINGOUTLET.COM

METALBUILDING
OUTLET CORP.

(303) 948-2038 | METALBUILDINGOUTLET.COM

PLANNING AHEAD

PROTECTING YOURSELF AND YOUR ASSETS

SAFETY & INSURANCE

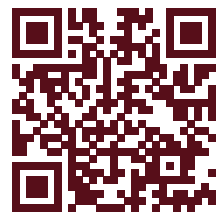
It is important to have a safety plan in place before you start construction to protect your assets from legal implications arising out of events that could potentially go wrong. Following metal building construction safety guidelines when erecting your building should be your priority, nothing is more critical than maintaining a safe, drug and alcohol-free work environment. Heights and construction can be dangerous making it important to ensure that your contractor performs work with a safety culture in mind. Protective gear and harnesses, in addition to adequate insurance such as liability and workman's compensation, are highly recommended. Be sure to purchase additional insurance that covers your investment and materials during the delivery and installation process.



TEMPORARY BRACING PLAN

In addition to a safety plan, a temporary bracing plan is highly recommended. Temporary bracing provides temporary stability and stiffness to the building while the building is being assembled. Wind loads on bare frames differ from fully sheeted structures.

The temporary bracing should remain in place until the sheeting is completed.



[FOLLOW THIS LINK TO LEARN MORE](#)



PLANNING AHEAD

RESOURCES

Metal Building Outlet provides a construction package along with engineered stamped building drawings with building purchases. These should be reviewed and studied before you begin construction of your building and should be used in conjunction with the installation manuals and construction information below.



INSTALLATION MANUALS

- DOOR & WINDOW FRAMING
- FRAMING INSTALLATION
- TRIM INSTALLATION
- GLOSSARY



CONSTRUCTION TIPS

- BRACING INSTALLATION
- BRACKET INSTALLATION
- ANGLE INSTALLATION
- COLUMN INSTALLATION



CONSTRUCTION VIDEOS

- NEEDED EQUIPMENT
- COLD FORMED VS RED IRON
- MAXIMIZE JOB EFFICIENCY
- BRACING DURING CONSTRUCTION

FOR MORE INFO FOLLOW THIS LINK: WWW.METALBUILDINGOUTLET.COM/CF-TIPS/

BUILDING DELIVERY

BE SURE TO COMPLETELY INVENTORY YOUR BUILDING MATERIALS!

Please have proper equipment and sufficient personnel for off-loading your building and make sure your site is accessible for the carrier's equipment. You will need a forklift and dunnage. A spreader bar may be needed for panels longer than 20' to prevent bends in the panels during offloading. The buyer is responsible for the inspection and inventory upon delivery. Any damages and claims must be noted on the bill of lading at the time of delivery. Failure to inspect and note potential claims shall waive any claims.



Local building code requirements vary upon job site location. It is the responsibility of the building owner or purchaser to verify and ensure the building purchase meets local code requirements.

ADVANTAGES

BENEFITS OF COLD FORMED CONSTRUCTION

Why might you consider a cold-formed metal building as opposed to a red iron building? They offer many notable advantages.

GALVANIZED FRAMING

Cold-formed building's primary and secondary framing is comprised of superior galvanized framing. The galvanized framing improves the overall aesthetic by making the building feel brighter and more open, it also resists rust, making it especially well-suited for areas prone to high humidity and moisture.

LOWER FOUNDATION AND CONCRETE COSTS

Cold-formed foundations are designed with a single-pour thickened edge slab and post-installed anchors. Cold-formed buildings do not require as much concrete for their foundations reducing materials and labor costs combined, saving money vs. red iron foundations

EASE OF CONSTRUCTION

Cold-formed steel buildings come easy to understand and are ready for installation as a kit. The installation videos and construction tips provided, make these buildings ideal for both skilled construction crews or owners erecting on their own.

FOUNDATION PLAN

Unlike other metal buildings, a stamped standard design engineered foundation plan is included with every building. The foundation plan aligns with your building design, offering the building owner cost savings over hiring a separate foundation engineer.

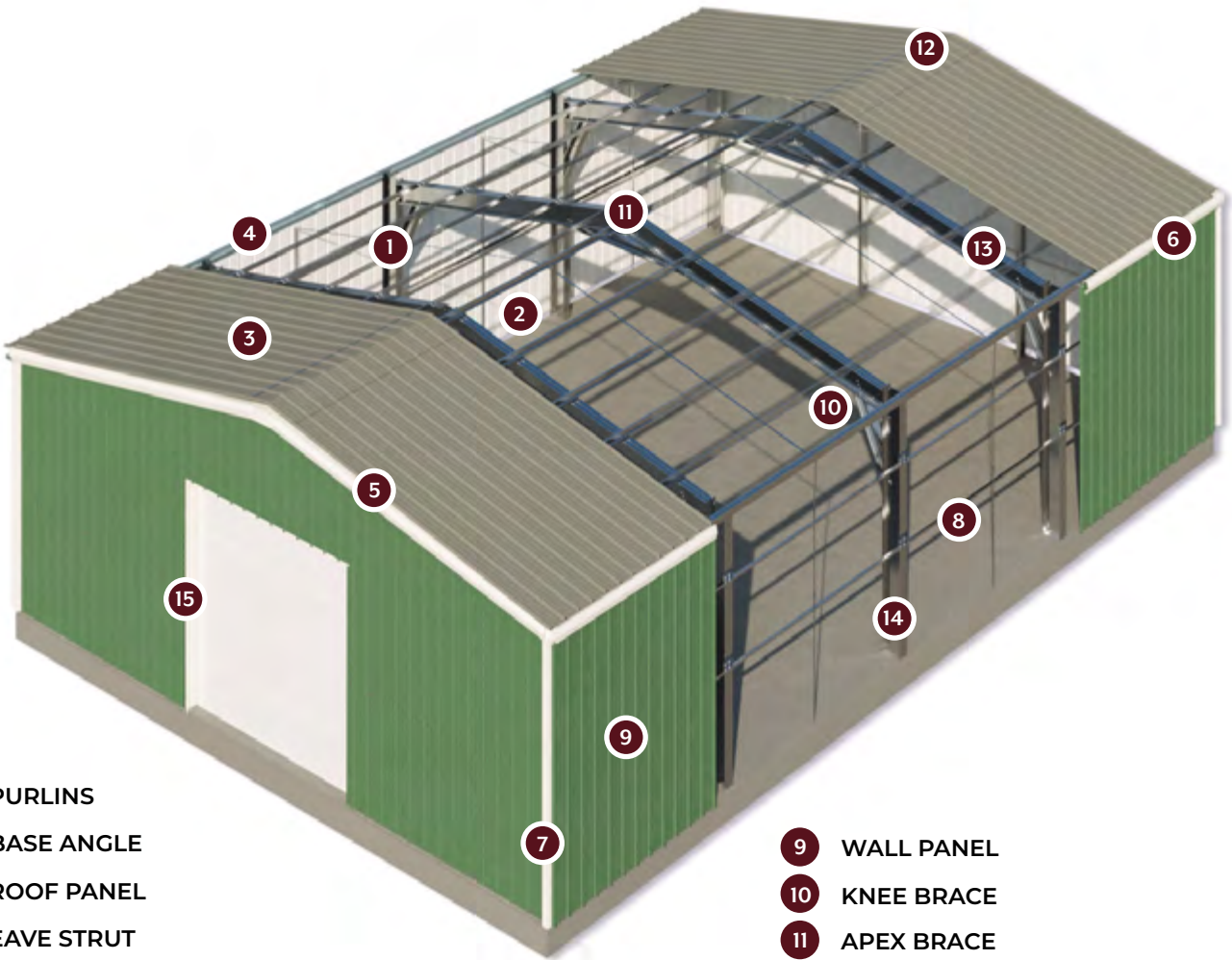
SHORTER DELIVERY TIMES

Cold-formed steel buildings commonly have much quicker delivery times, leading to shorter turnaround times and sometimes lower freight costs.



METAL BUILDING COMPONENTS

GETTING TO KNOW YOUR BUILDING



- 1 PURLINS
- 2 BASE ANGLE
- 3 ROOF PANEL
- 4 EAVE STRUT
- 5 RAKE TRIM
- 6 EAVE TRIM
- 7 CORNER TRIM
- 8 GIRT

- 9 WALL PANEL
- 10 KNEE BRACE
- 11 APEX BRACE
- 12 DIE-FORMED RIDGE CAP
- 13 COLD FORMED FRAME RAFTER
- 14 COLD FORMED FRAME COLUMN
- 15 OVERHEAD DOOR WRAP TRIM

ERECTION DISCLAIMER

From time to time a buyer may request names of contractors or erectors to put up the products ordered from our company. The provision of such names should not be considered as a recommendation or representation of the skill, quality of workmanship, or ability of an erector or contractor and we strongly urge you to obtain and check references and insurance certificates of all the erectors before selecting one to perform the work.

Presently, there are no erectors, contractors, or dealers that are employees or agents of the supplier without exception; this is the policy of the dealer and their affiliates, if any. You agree to release the material supplier and all affiliated companies of any responsibilities and claims arising out of the erection process and/or relationship of the erector.

SINGLE STORY FRAMING

SINGLE STORY FRAMING

SINGLE STORY FRAMING

8

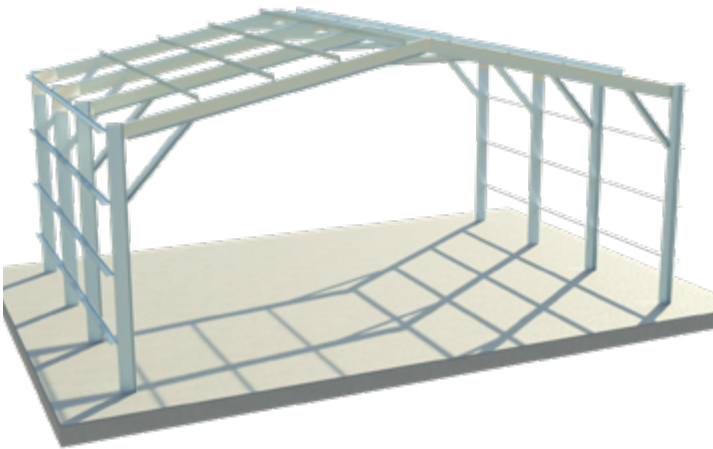


SINGLE STORY FRAMING

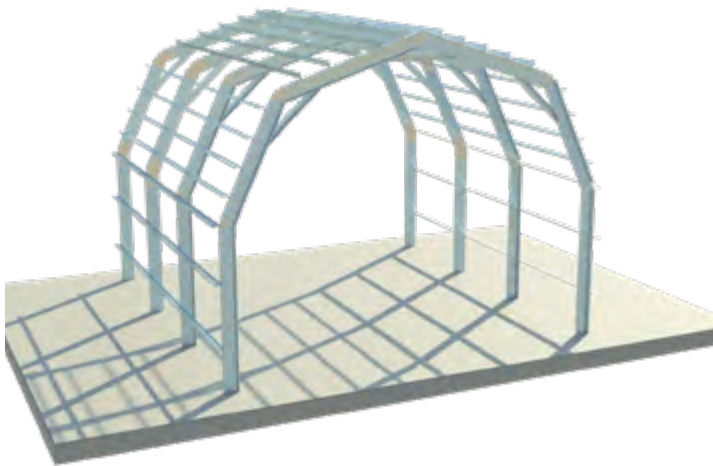
SINGLE STORY FRAMING OPTIONS

FRAMING OPTIONS

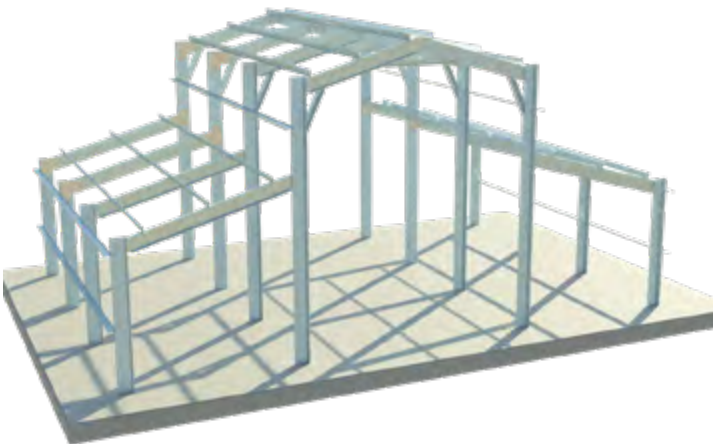
9



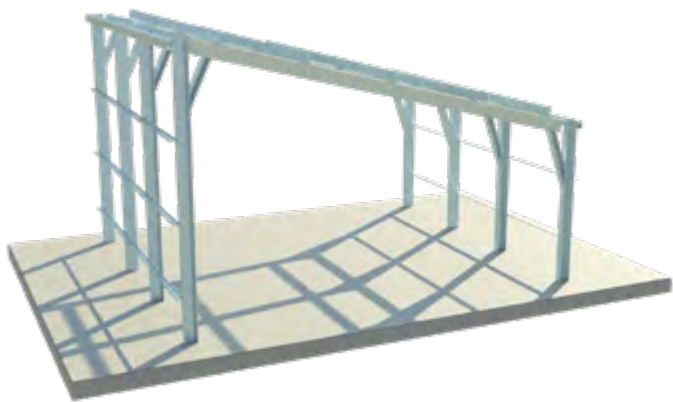
CABLE



GAMBREL



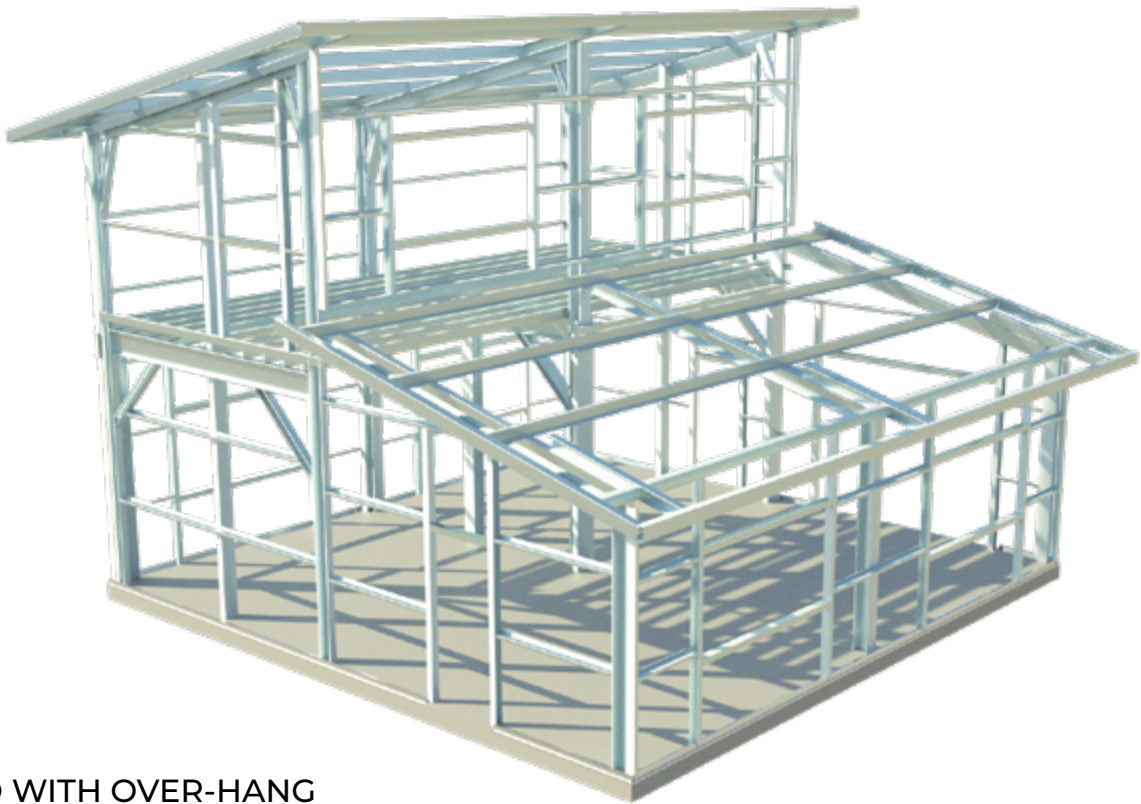
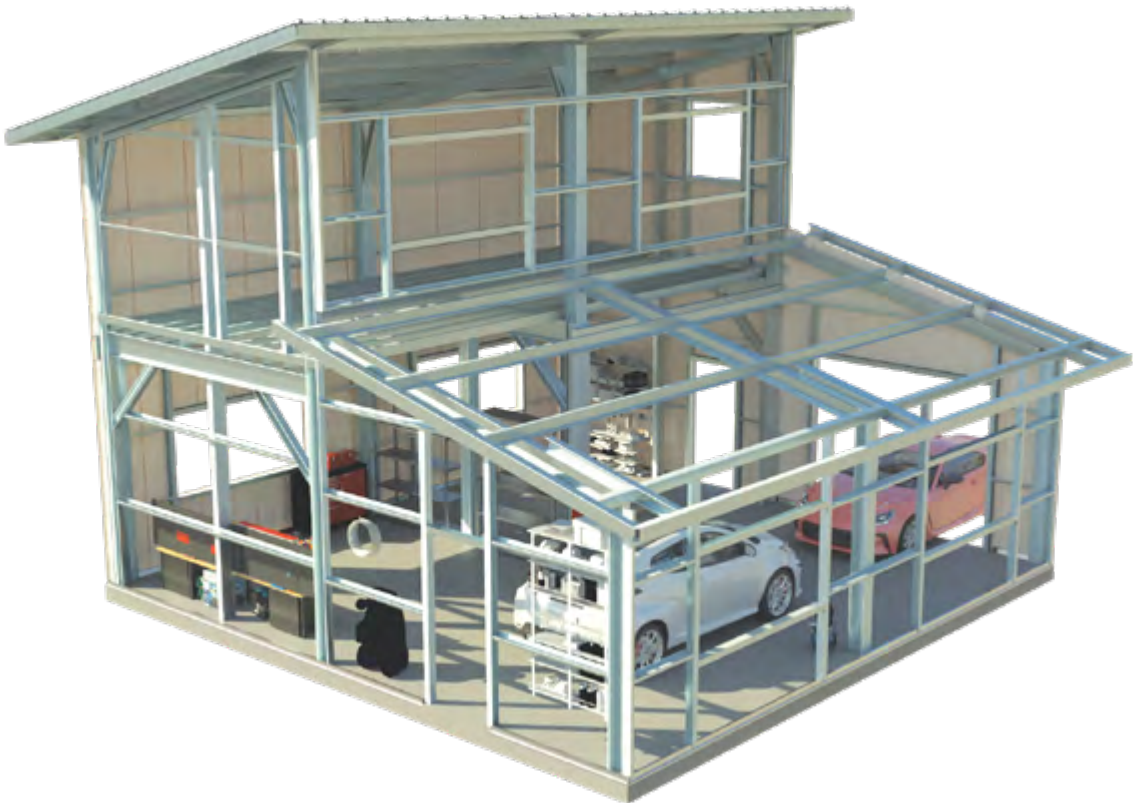
MONITOR STYLE



SINGLE SLOPE

TWO STORY FRAMING

TWO STORY FRAMING



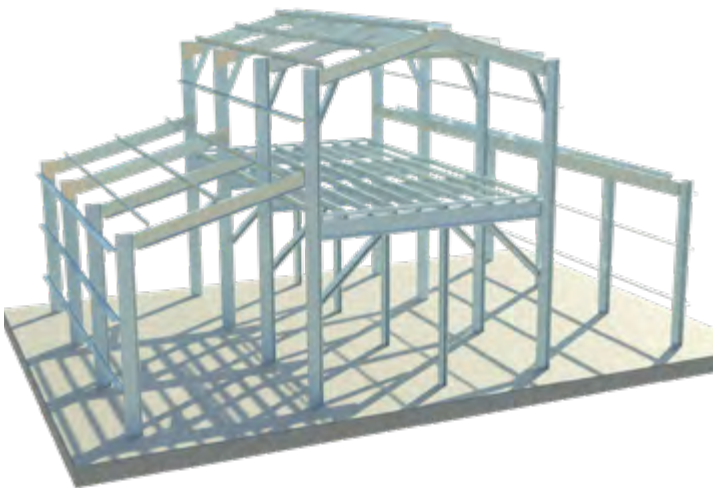
LEAN-TO WITH OVER-HANG

TWO STORY FRAMING

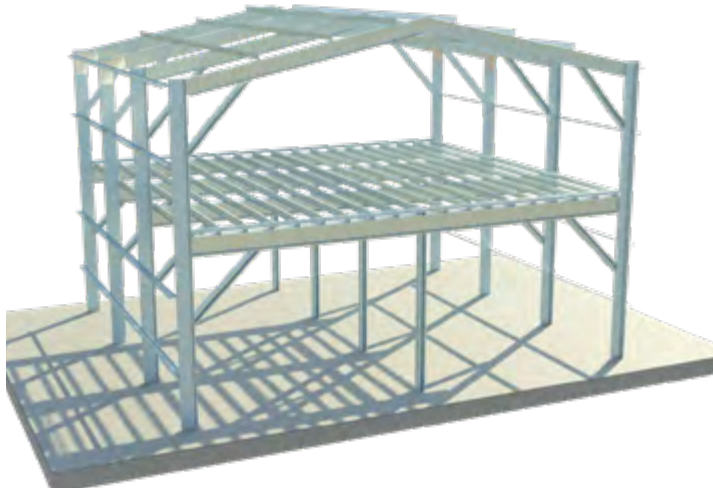
10

TWO STORY FRAMING

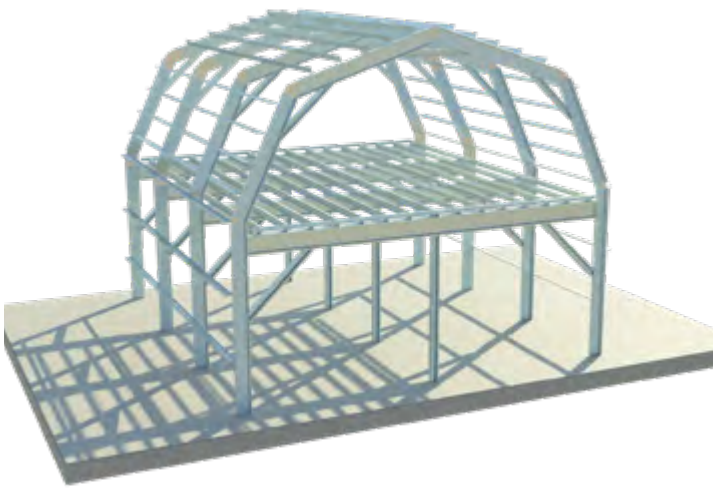
TWO STORY FRAMING OPTIONS WITH MEZZANINE



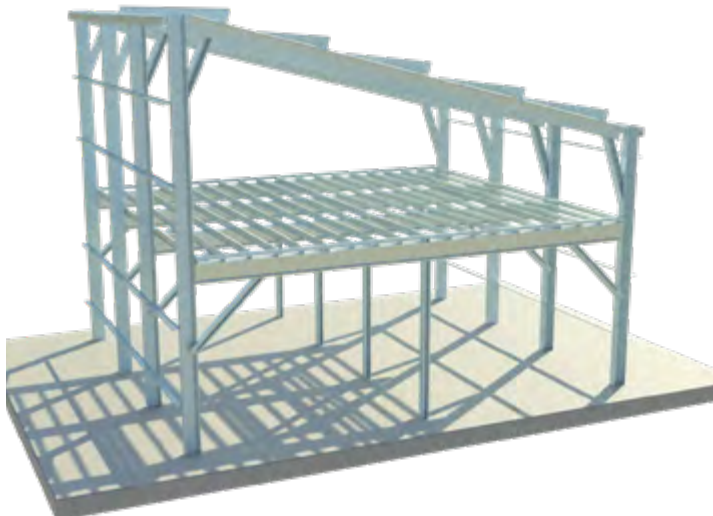
MONITOR STYLE WITH MEZZANINE



GABLE WITH MEZZANINE



GAMBREL WITH MEZZANINE



SINGLE SLOPE WITH MEZZANINE

FRAMING OPTIONS

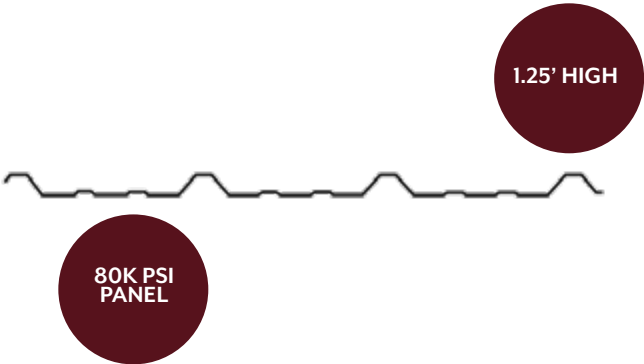
11

SHEETING

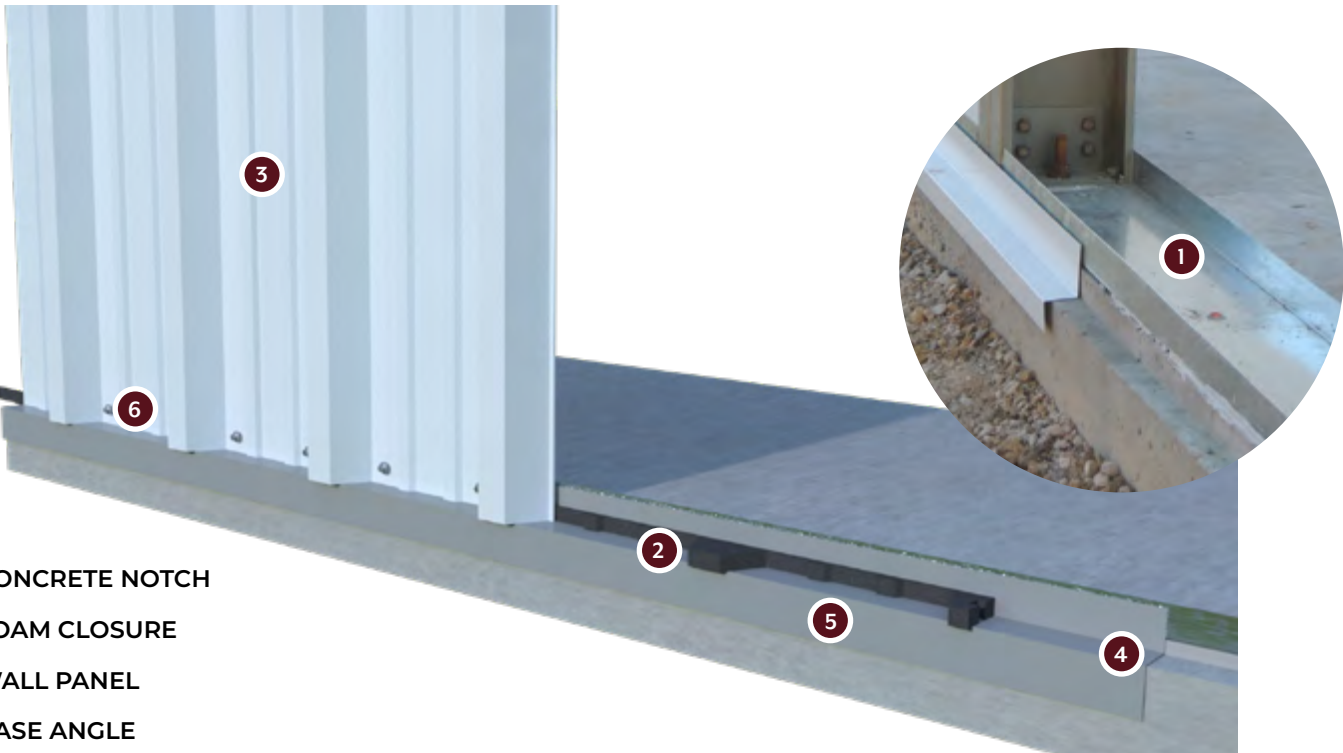
PANEL OPTIONS

HIGH RIB PBR PANEL

High Rib PBR Panels are commonly used in a wide variety of buildings and applications. These panels feature a purlin bearing rib that comes with a standard 36" width coverage, accompanied by 12" on center spacing.



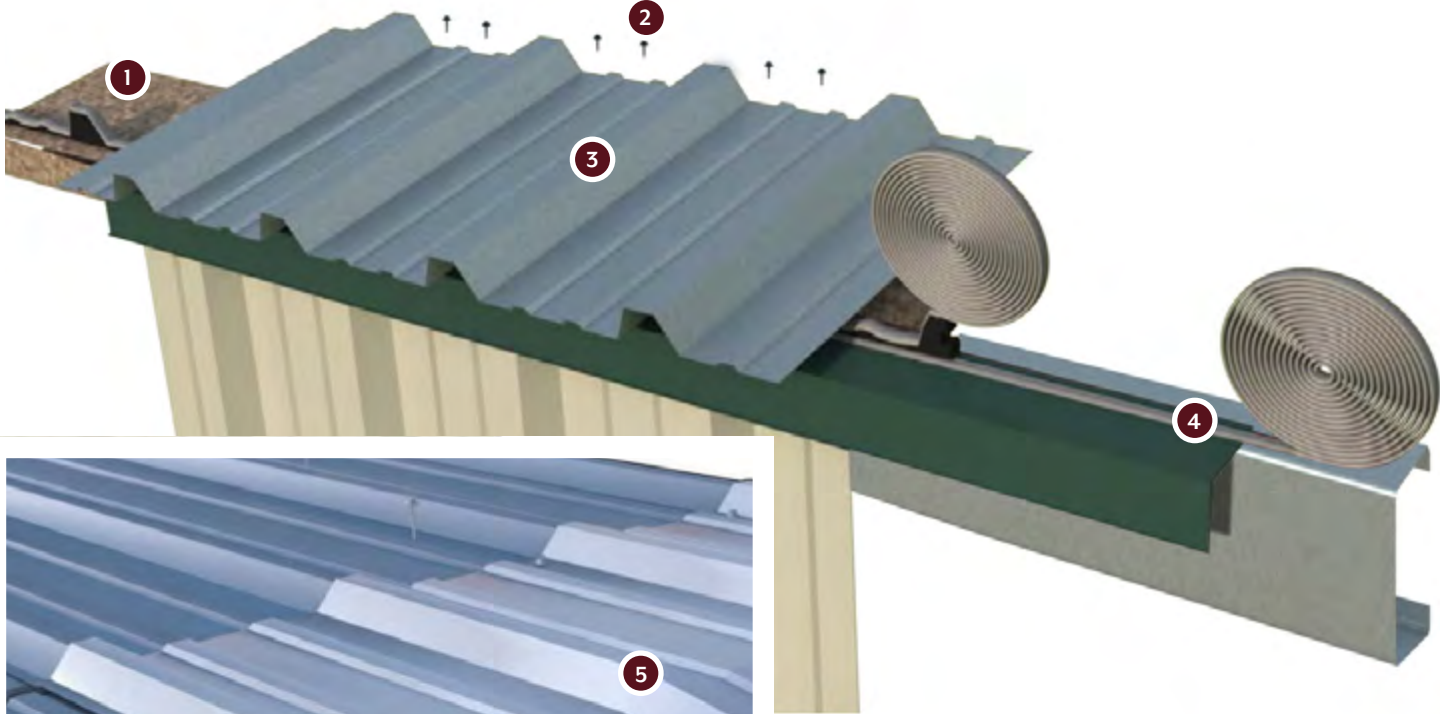
WALL SHEETING



- 1 CONCRETE NOTCH
- 2 FOAM CLOSURE
- 3 WALL PANEL
- 4 BASE ANGLE
- 5 BASE TRIM
- 6 FASTENER

SHEETING

PANEL OPTIONS



- 1 EAVE CLOSURE
- 2 FASTENER
- 3 ROOF PANEL
- 4 EAVE SEALANT
- 5 RIDGE CAP

FASTENERS



INSTALLING SELF-DRILLING SCREWS

Our “Long Life” fasteners are high-quality, high-strength, and corrosion-resistant. They come with a red rust warranty and are color -matched to your building.

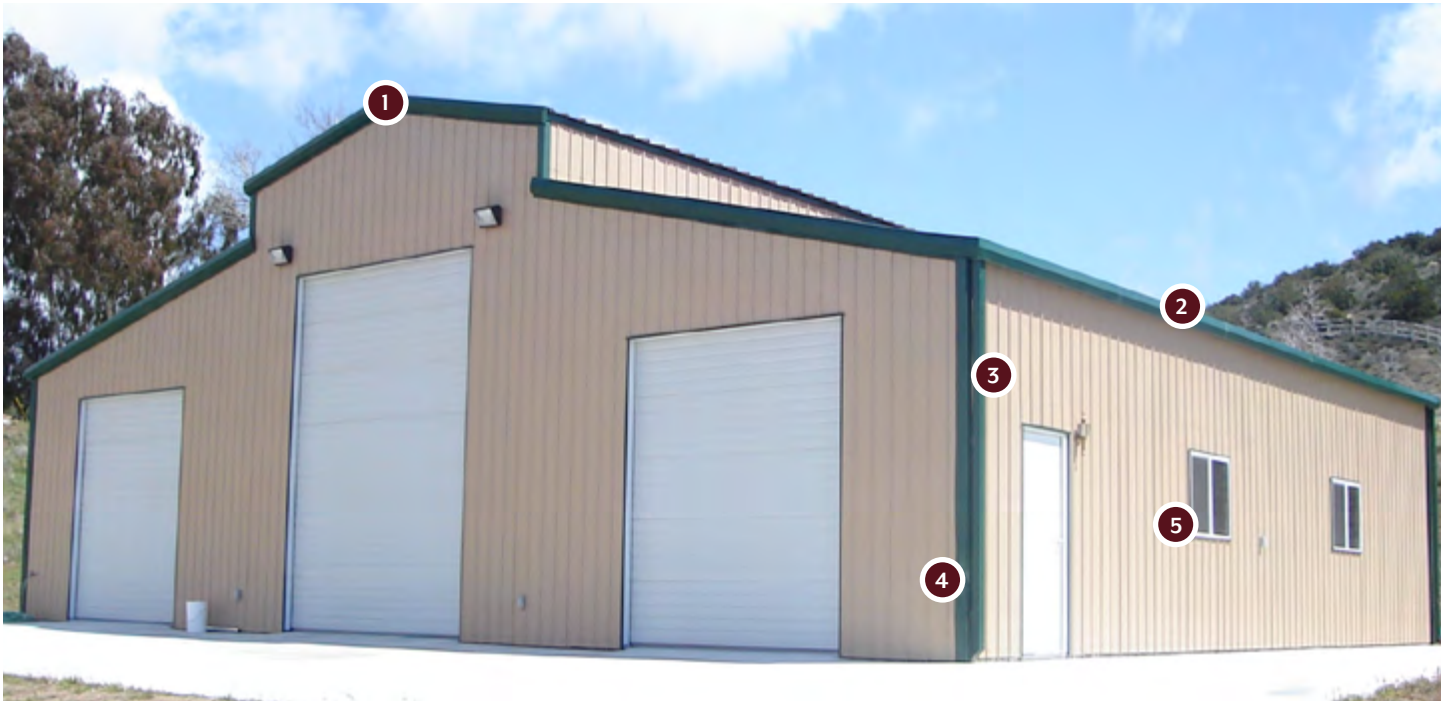
The special cupped head design prevents overdrilling and safeguards the washer from UV rays.



[FOLLOW THIS LINK TO LEARN MORE](#)

TRIM

TRIM OPTIONS



EAVE TRIM

- 1 GABLE TRIM
- 2 EAVE TRIM W/ GUTTER
- 3 DOWN SPOUT
- 4 CORNER TRIM
- 5 WINDOW TRIM



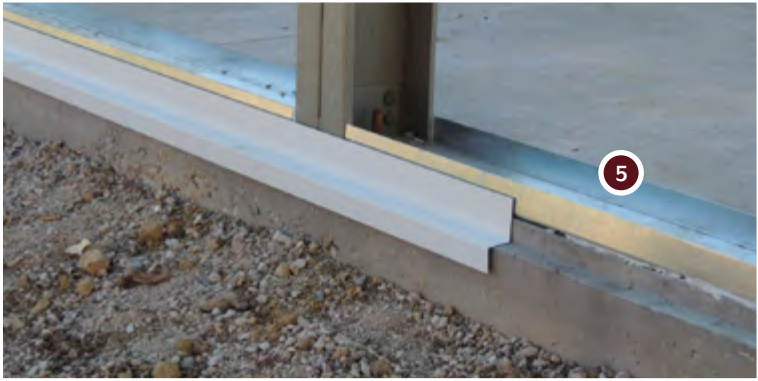
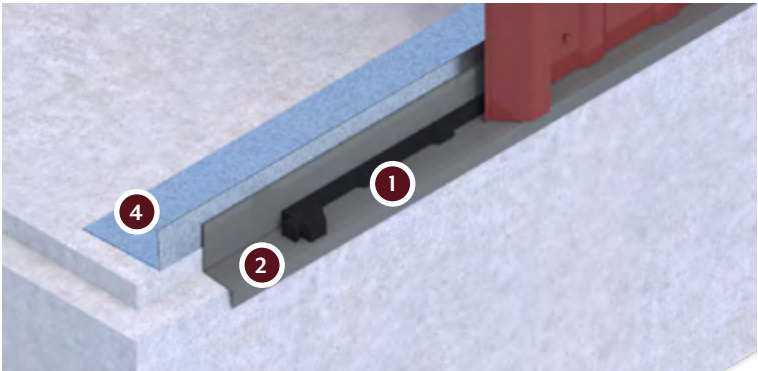
FULL WRAP DOOR TRIM

- 1 J-TRIM CLOSURE
- 2 FULL WRAP DOOR TRIM
- 3 WAINSCOT TRIM



TRIM

TRIM OPTIONS



BASE TRIM

As part of our standard offering, all of our buildings include base trim. This includes a galvanized base angle, which effectively protects the concrete from rusting. Additionally, a galvanized base channel is provided, offering a secure attachment method for the interior line panel.

- 1 CLOSURE
- 2 BASE TRIM
- 3 CORNER TRIM
- 4 GALVANIZED BASE ANGLE
- 5 OPTIONAL GALVANIZED BASE CHANNEL
- 6 OPTIONAL GUTTER AND DOWNSPOUT



WAINSCOT

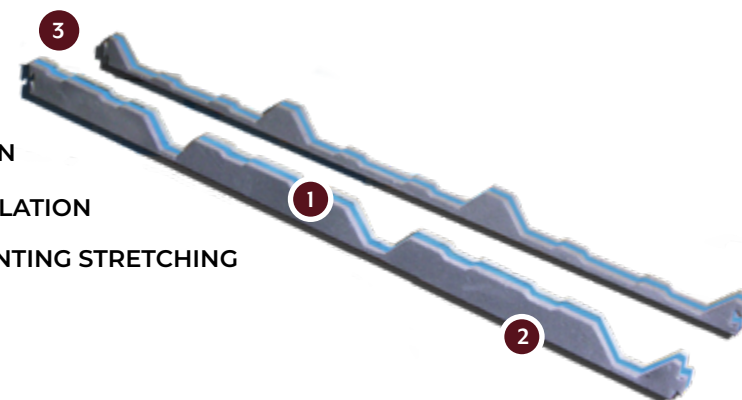
METAL WAINSCOT

WAINSCOT

You have the flexibility to enhance the exterior of any building by incorporating wainscot, which adds color or contrast. To further refine the appearance, transition trim can be installed to create a smooth transition between the two colors. At the height of the wainscot, a girt is positioned for added structural support. Typically, wainscot is set at 4 feet, but it can be customized to any desired height. For increased curb appeal, you have the option to incorporate custom brick or stone finishes into the wainscot design.

CLOSURES

Our closed cell closures offer an upgraded level of quality and performance. They are designed with precise positioning and a superior fit and interlock at the eave and base, seamlessly integrating underneath the metal panels. This effectively prevents the entry of water, dust, air, and pests, providing a secure and weather-resistant barrier.



- 1 MOISTURE-PROOF CLOSED CELL CONSTRUCTION
- 2 SEMI-RIGID FOR EASIER HANDLING AND INSTALLATION
- 3 DOVETAIL JOINTS ELIMINATE GAPS AND PREVENTING STRETCHING

DOORS

STEEL WALK DOORS & OVERHEAD DOORS

STEEL WALK DOORS

Our steel walk doors are designed to meet high standards, starting with their heavy 20-gauge construction. These doors come insulated. Included with the doors are a lever lock, a subframe with full trim, and closure strips to ensure a complete and secure installation.

The standard walk door is equipped with polystyrene insulation, providing an R-Value of 6.14. However, for even greater insulation capabilities, we offer an upgraded option with a polyurethane core, boasting an impressive R-Value of 11.



OVERHEAD DOORS

Our overhead doors are highly versatile, offering a range of options to suit any size framed opening. They are available in various heights and widths, allowing for a perfect fit. You have the choice between insulated and non-insulated options based on your specific needs. To further customize your overhead door, we offer additional features such as glass lites, track options, and weatherstripping. Glass lites can be incorporated to introduce natural light into the space, while track options ensure smooth and efficient operation. Weather stripping is available to enhance the door's sealing capabilities, providing protection against the elements.



METALBUILDING
OUTLET CORP.

(303) 948-2038 | METALBUILDINGOUTLET.COM

METALBUILDING
OUTLET CORP.

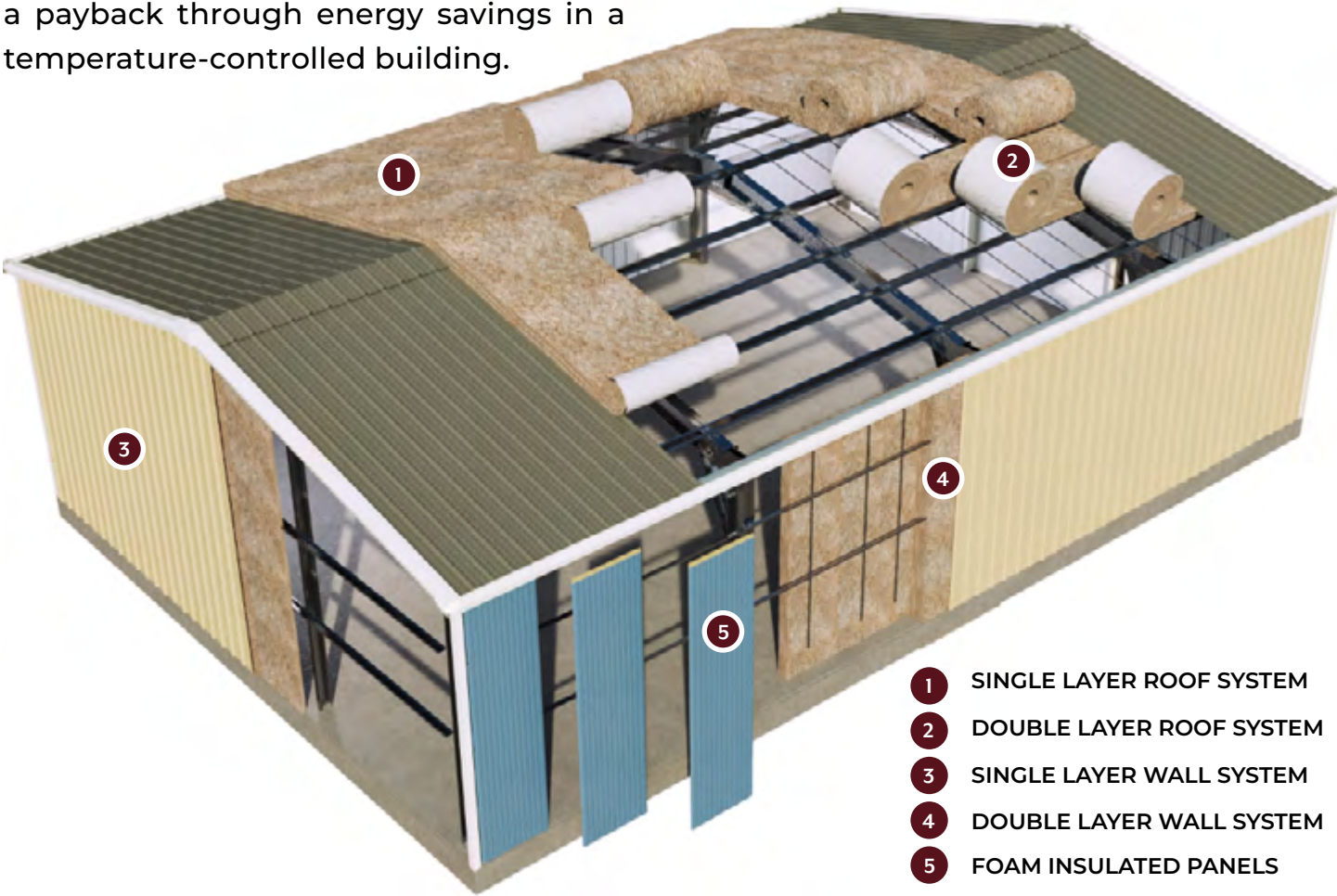
(303) 948-2038 | METALBUILDINGOUTLET.COM

INSULATION

OPTIONS FOR INSULATING YOUR BUILDING

INSULATION

It is important to choose the best metal building insulation system for your building use. We supply all types of insulation systems, from basic quality single-layer insulation systems to high-performance thermal insulation systems. We are advocates for more insulation and maximizing the thermal performance knowing that it is the one thing that has a payback through energy savings in a temperature-controlled building.



- 1 SINGLE LAYER ROOF SYSTEM
- 2 DOUBLE LAYER ROOF SYSTEM
- 3 SINGLE LAYER WALL SYSTEM
- 4 DOUBLE LAYER WALL SYSTEM
- 5 FOAM INSULATED PANELS

Contact your project consultant to discuss the insulation system that best fits your building type and needs. We also encourage you to verify any required energy codes in your area.

COLORS

We offer up to a 45 year warranty on most colors



We have a wide variety of options that truly make your building beautiful and one-of-a-kind. Our color options run across not only the exterior of your building but are also incorporated into our trim packages and even down to the actual exterior screws.

COLD FORM

COLD FORM BUILDINGS

METALBUILDING
OUTLET CORP.



METALBUILDING
OUTLET CORP.

(303) 948-2038 | METALBUILDINGOUTLET.COM

v09.23