

DOORS

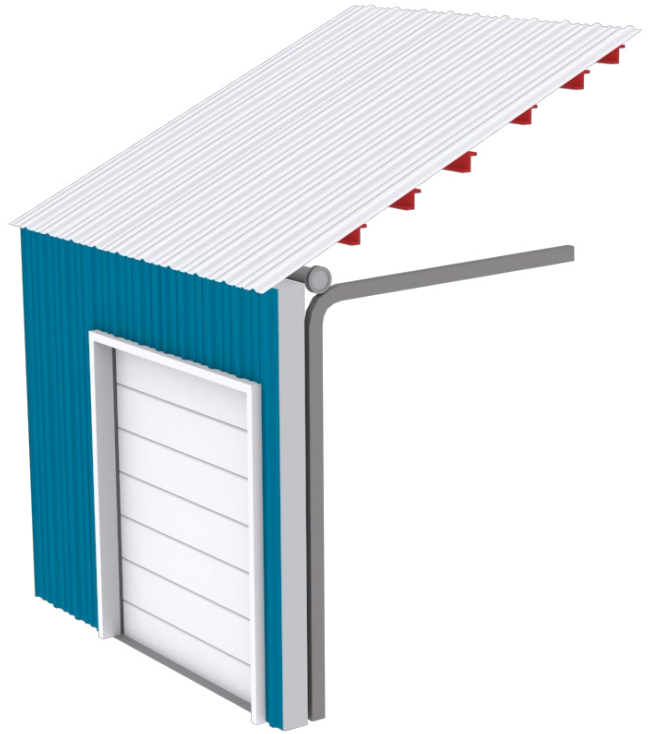
OVERHEAD DOORS - ROLL DOORS - STEEL WALK DOORS

METAL BUILDING
OUTLET CORP.

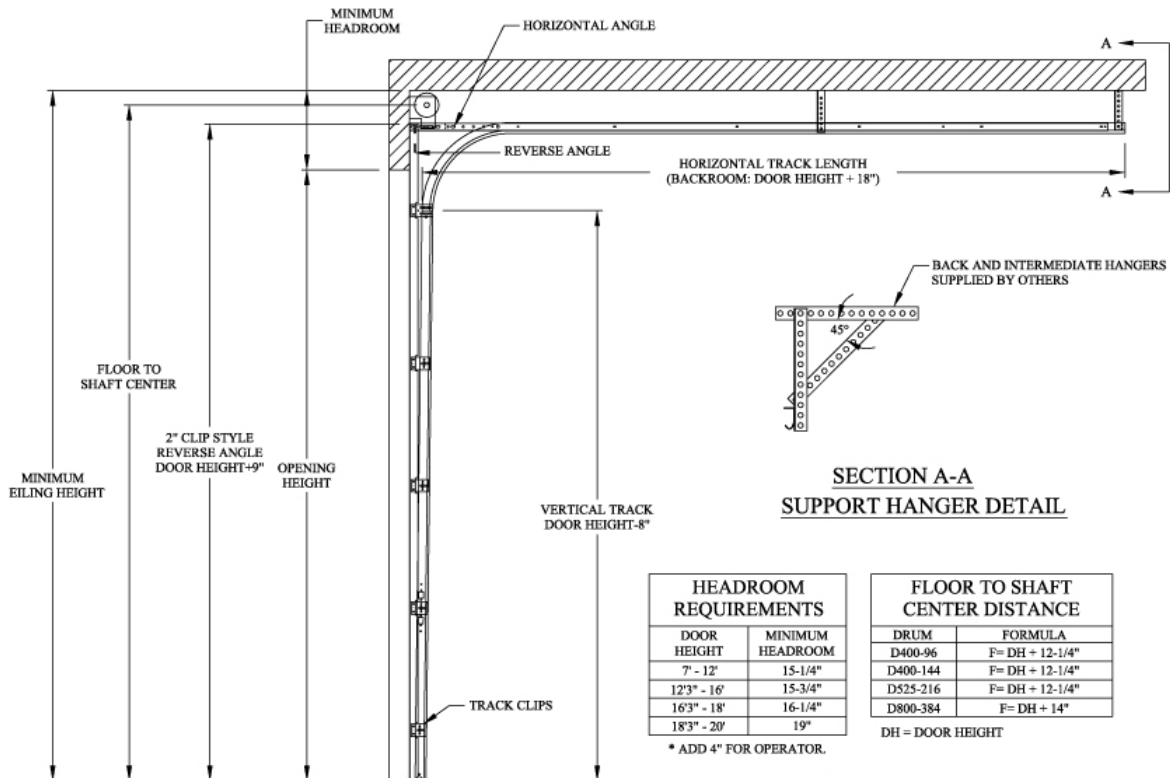
(303) 948-2038

STANDARD LIFT

This option is used in standard applications where typical headroom is provided. Standard headroom usually is 15" – 36" between the top of the door and the ceiling.



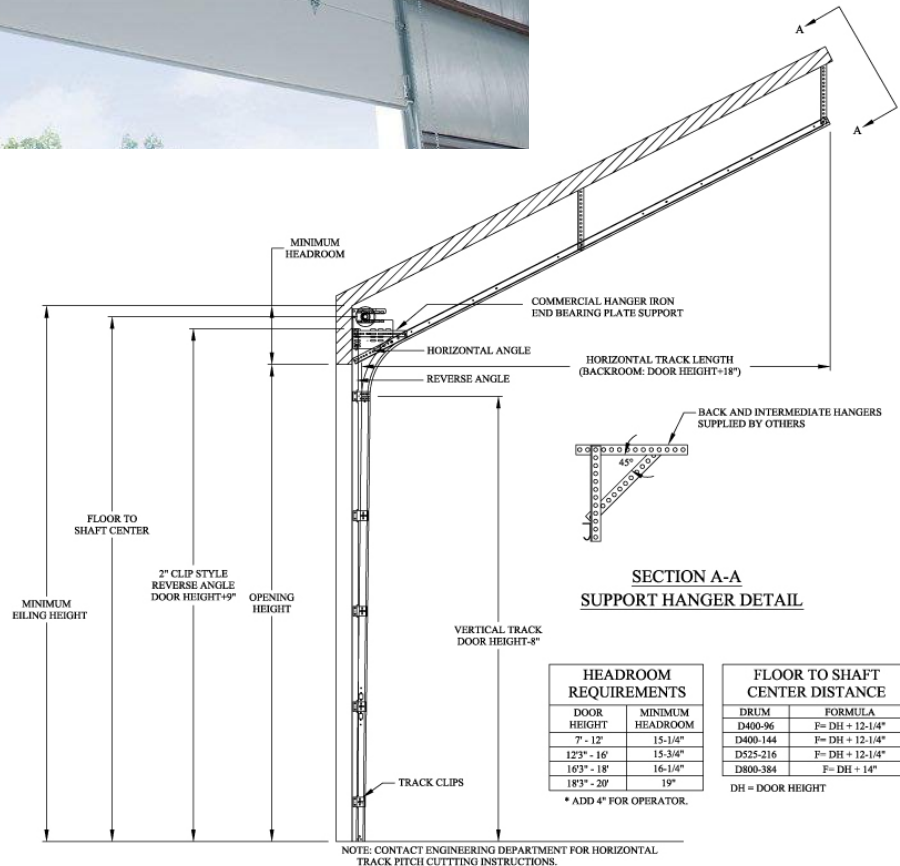
OVERHEAD DOOR OPTIONS



STANDARD LIFT ANGLE MOUNT TRACK SET DETAIL

STANDARD FOLLOW ROOF PITCH LIFT

Modification of the standard lift aligns track to follow the roof pitch line. It is recommended on buildings with roof pitches greater than 3:12. This option allows for maximum additional clearance under the track.



HEADROOM REQUIREMENTS	
DOOR HEIGHT	MINIMUM HEADROOM
7' - 12'	15-1/4"
12'3" - 16'	15-3/4"
16'3" - 18'	16-1/4"
18'3" - 20'	19"

FLOOR TO SHAFT CENTER DISTANCE	
DRUM	FORMULA
D400-96	F = DH + 12-1/4"
D400-144	F = DH + 12-1/4"
D525-216	F = DH + 12-1/4"
D800-384	F = DH + 14"

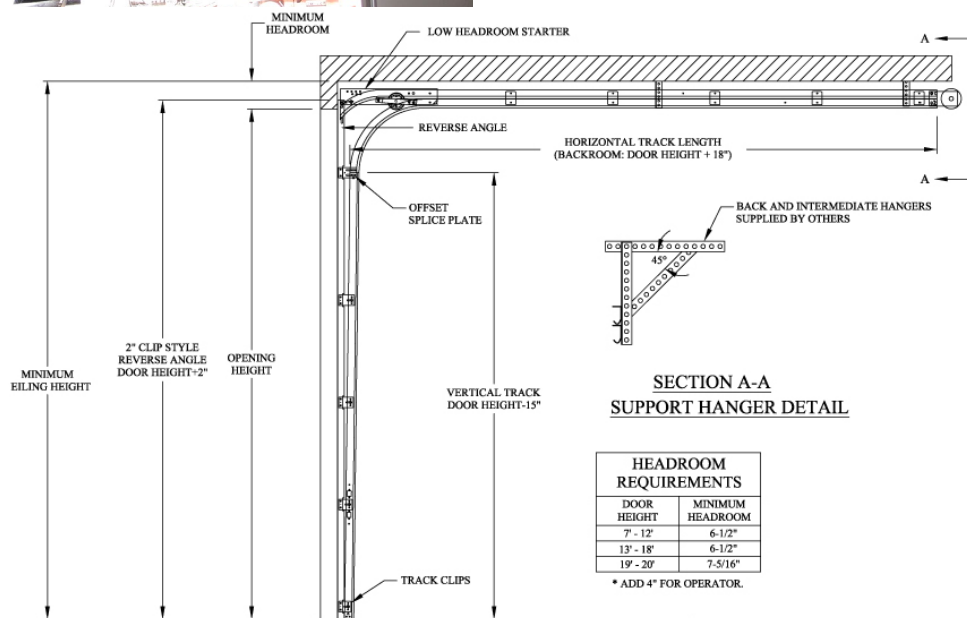
* ADD 4" FOR OPERATOR.

DH = DOOR HEIGHT

STANDARD LIFT FOLLOW THE ROOF PITCH
ANGLE MOUNT TRACK SET DETAIL

LOW HEADROOM LIFT

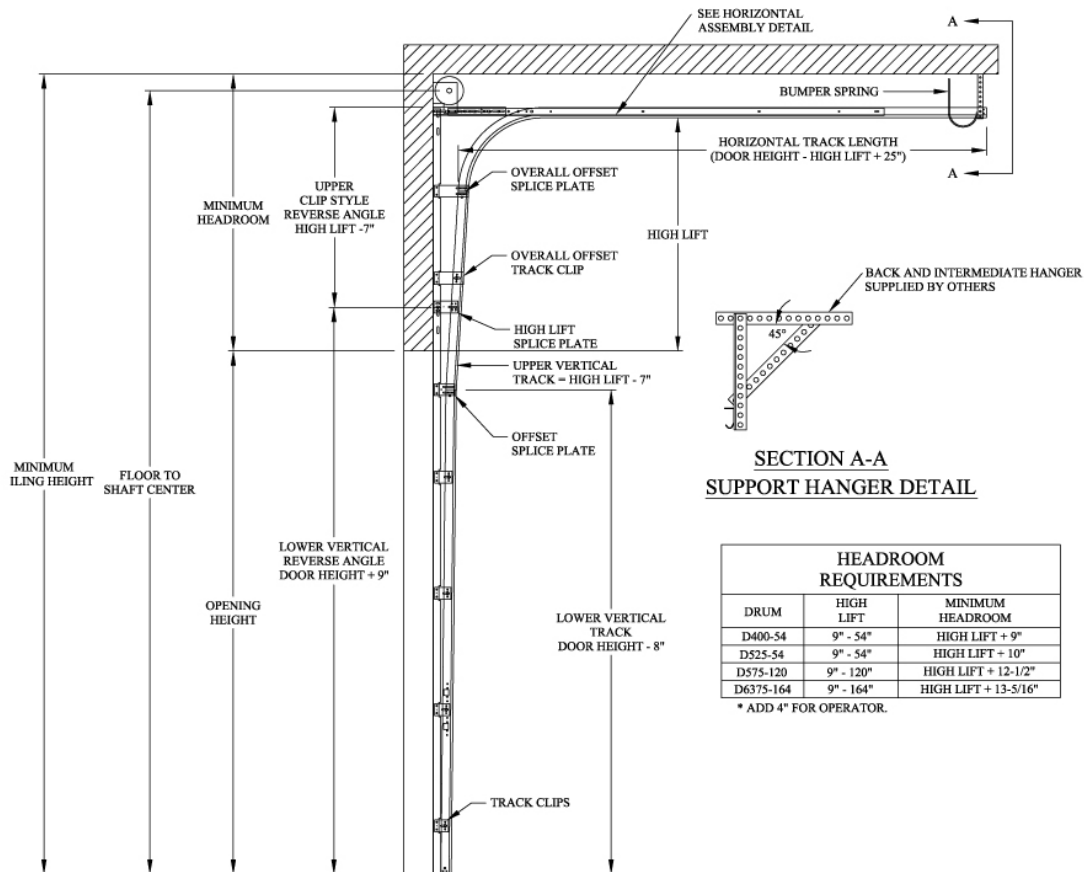
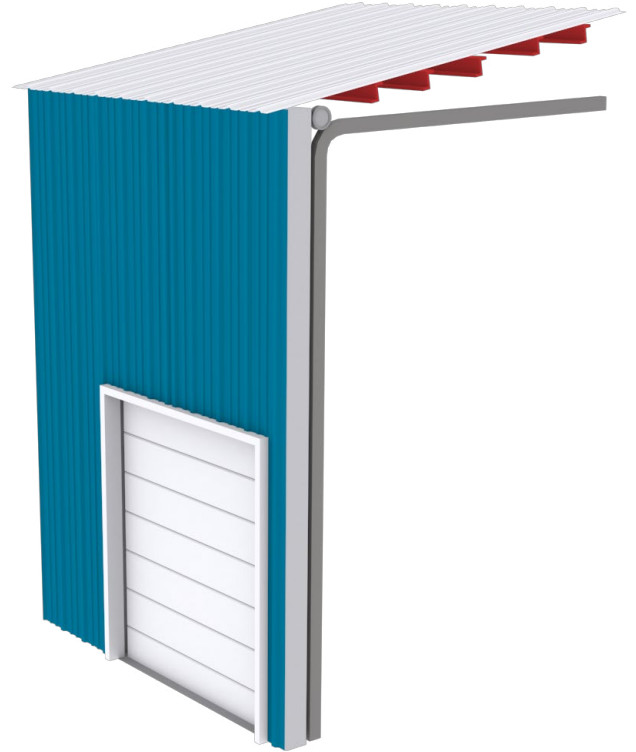
Used when ceiling heights less than 15" above the door height. This option is ideal when needing to maximize door height or low ceilings are unavoidable.



STANDARD LIFT LOW HEADROOM TO THE REAR
ANGLE MOUNT TRACK SET DETAIL

HIGH LIFT

Used when the ceiling height is more than 36" above the door height. This option allows for additional clearance under the track



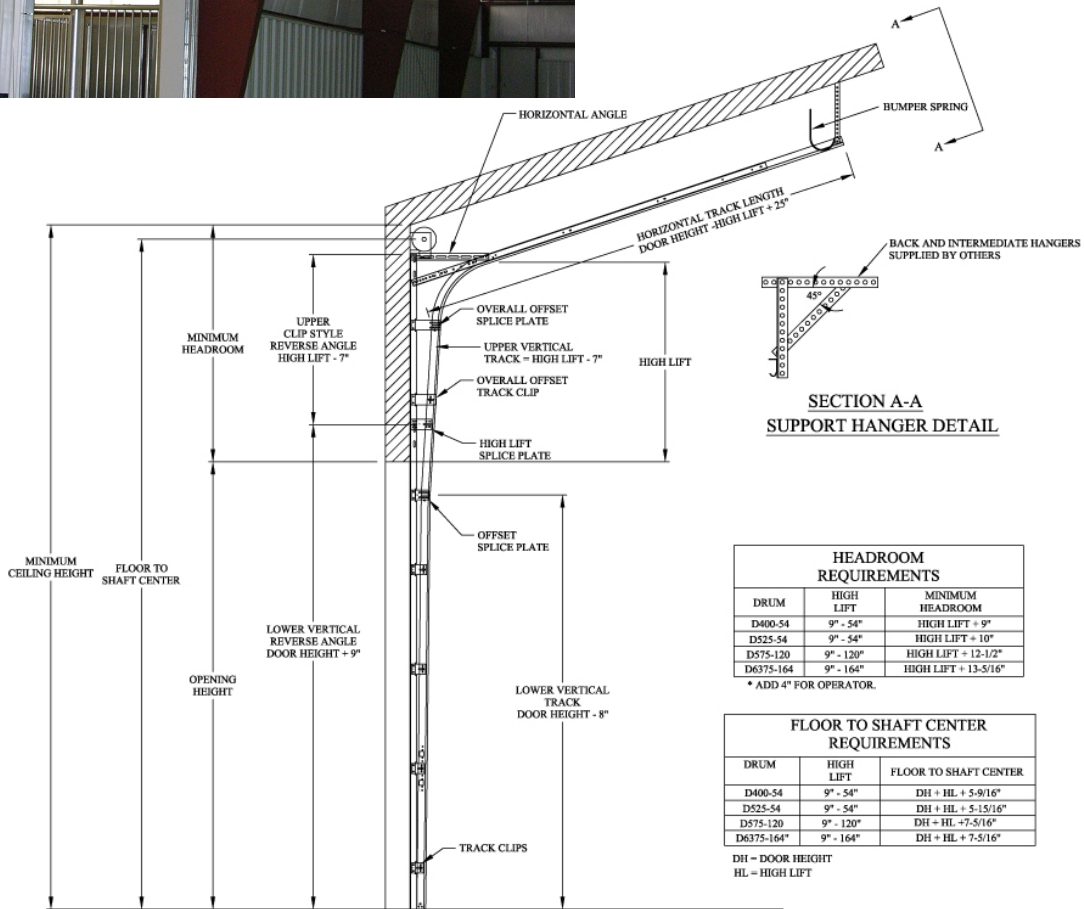
HEADROOM REQUIREMENTS		
DRUM	HIGH LIFT	MINIMUM HEADROOM
D400-54	9" - 54"	HIGH LIFT + 9"
D525-54	9" - 54"	HIGH LIFT + 10"
D575-120	9" - 120"	HIGH LIFT + 12-1/2"
D6375-164	9" - 164"	HIGH LIFT + 13-5/16"

* ADD 4" FOR OPERATOR.

HIGH LIFT STANDARD ANGLE MOUNT TRACK SET DETAIL

HIGH FOLLOW THE ROOF PITCH LIFT

Modification of the high lift aligns track to follow the roof pitch line. It is recommended on buildings with roof pitches greater than 3:12. This option allows for maximum additional clearance under the track.



HEADROOM REQUIREMENTS		
DRUM	HIGH LIFT	MINIMUM HEADROOM
D400-54	9" - 54"	HIGH LIFT + 9"
D525-54	9" - 54"	HIGH LIFT + 10"
D575-120	9" - 120"	HIGH LIFT + 12-1/2"
D6375-164	9" - 164"	HIGH LIFT + 13-5/16"

* ADD 4" FOR OPERATOR.

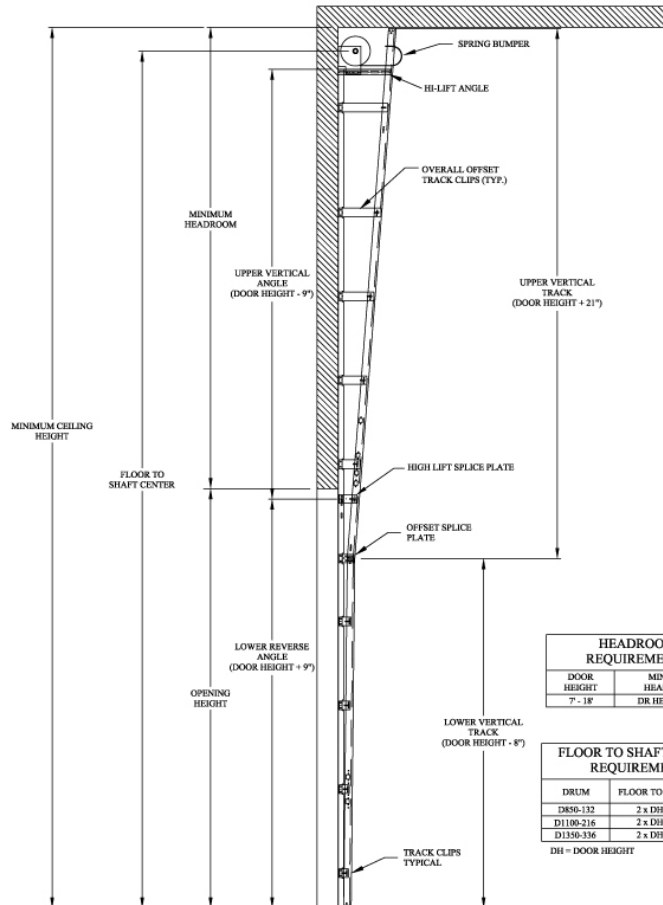
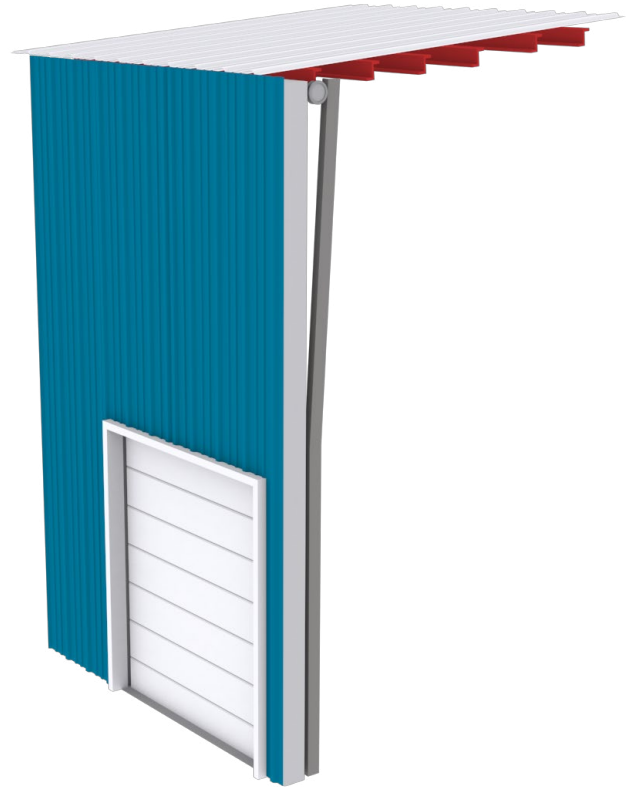
FLOOR TO SHAFT CENTER REQUIREMENTS		
DRUM	HIGH LIFT	FLOOR TO SHAFT CENTER
D400-54	9" - 54"	DH + HL + 5-9/16"
D525-54	9" - 54"	DH + HL + 5-15/16"
D575-120	9" - 120"	DH + HL + 7-5/16"
D6375-164	9" - 164"	DH + HL + 7-5/16"

DH - DOOR HEIGHT
HL - HIGH LIFT

HIGH LIFT ANGLE MOUNT TRACK SET DETAIL

VERTICAL LIFT

Used when ceiling height above the door is greater than 2 times the door height. This option allows for no overhead track. Optimal in equestrian buildings, buildings with mezzanines, or buildings with cranes.

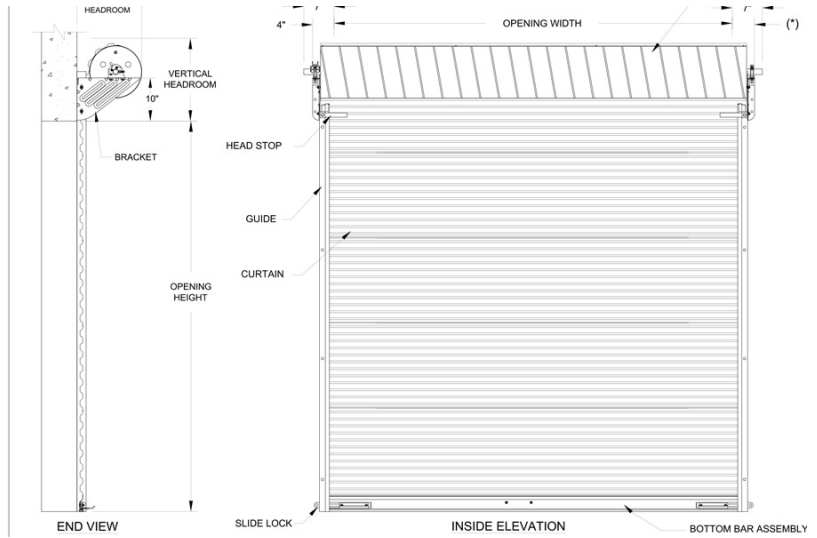


VERTICAL LIFT STANDARD 2" ANGLE MOUNT TRACK SET DETAIL

ROLL DOORS

Measure Roll Up Door Rough Opening

Use the diagram below to measure the rough opening for your roll up door or mini storage door. Exact measurements are important to ensuring the correct fit and proper operation of your door. Calculate your measurements to the closest fraction of an inch to make sure you have an accurate door size.



Measure Inside Dimensions of the Door Jamb

Measure the width of the rough opening at the widest point. This is the distance between the right and left sides of the rough opening in feet and inches (to the closest fraction of an inch). Then measure the height from the floor to the bottom of the header. The finished opening measurement will be the same size as the roll up door size you will need.



Measure Clearance of the Door Jamb

Measure the clearance from the inside edge of the jamb to the wall or nearest obstruction. The average distance required for most garage door installations is 3 1/2" to 4".



Measure Headroom

Measure the distance between the top of the door opening and the ceiling.

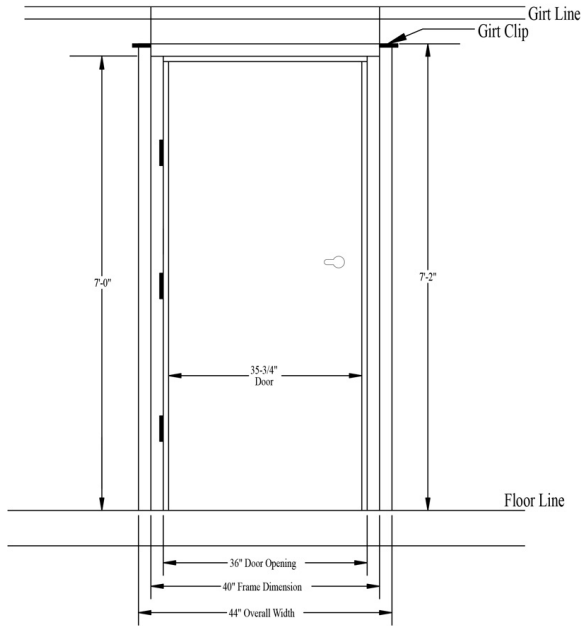
STEEL WALK DOORS

FOR DOOR OPTIONS SPEAK TO YOUR ACCOUNT MANAGER

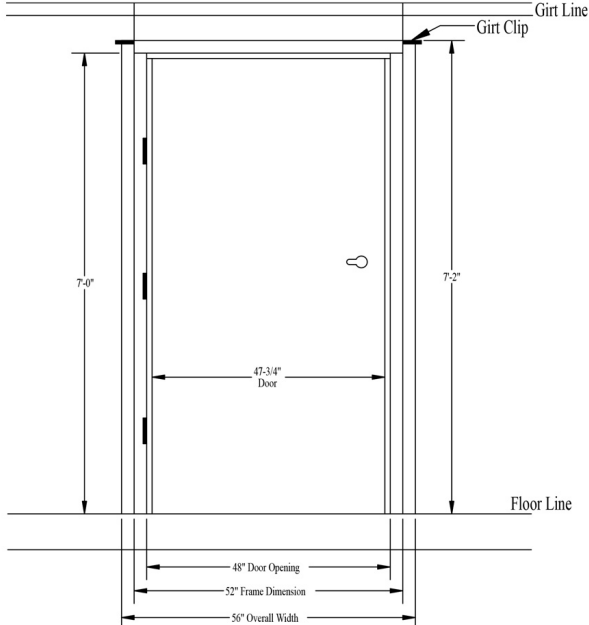


STEEL WALK OPTIONS

3070 Measurement Details



4070 Measurement Details



6070 Measurement Details

